

Measure E  
Site Logistics Meeting  
Santiago Hills ES

October 4, 2023



# MEETING AGENDA

- Introductions
- Overview of Measure E
- Project Overview
- Site Logistics & Phasing
- Communication
- Questions/Comments



# INTRODUCTIONS

## **Irvine Unified School District Facilities Planning / Construction Department**

- Kelvin Okino – Executive Director, Facilities Planning & Construction
- Christa DeBoer – Supervisor, Facilities/Construction



# Overview of Measure E



# MEASURE E PRIORITIES

- ✓ **Safety and security**
  - Install interior doors at elementary school classrooms
- ✓ **Age of the school site**
  - Modernize eligible schools over 25 years old
  - **Projects that will impact the greatest amount of students**
    - Projects for high schools and middle schools, which benefit most IUSD students, who will attend these schools
- ✓ **Upgrade Science Labs at middle schools**

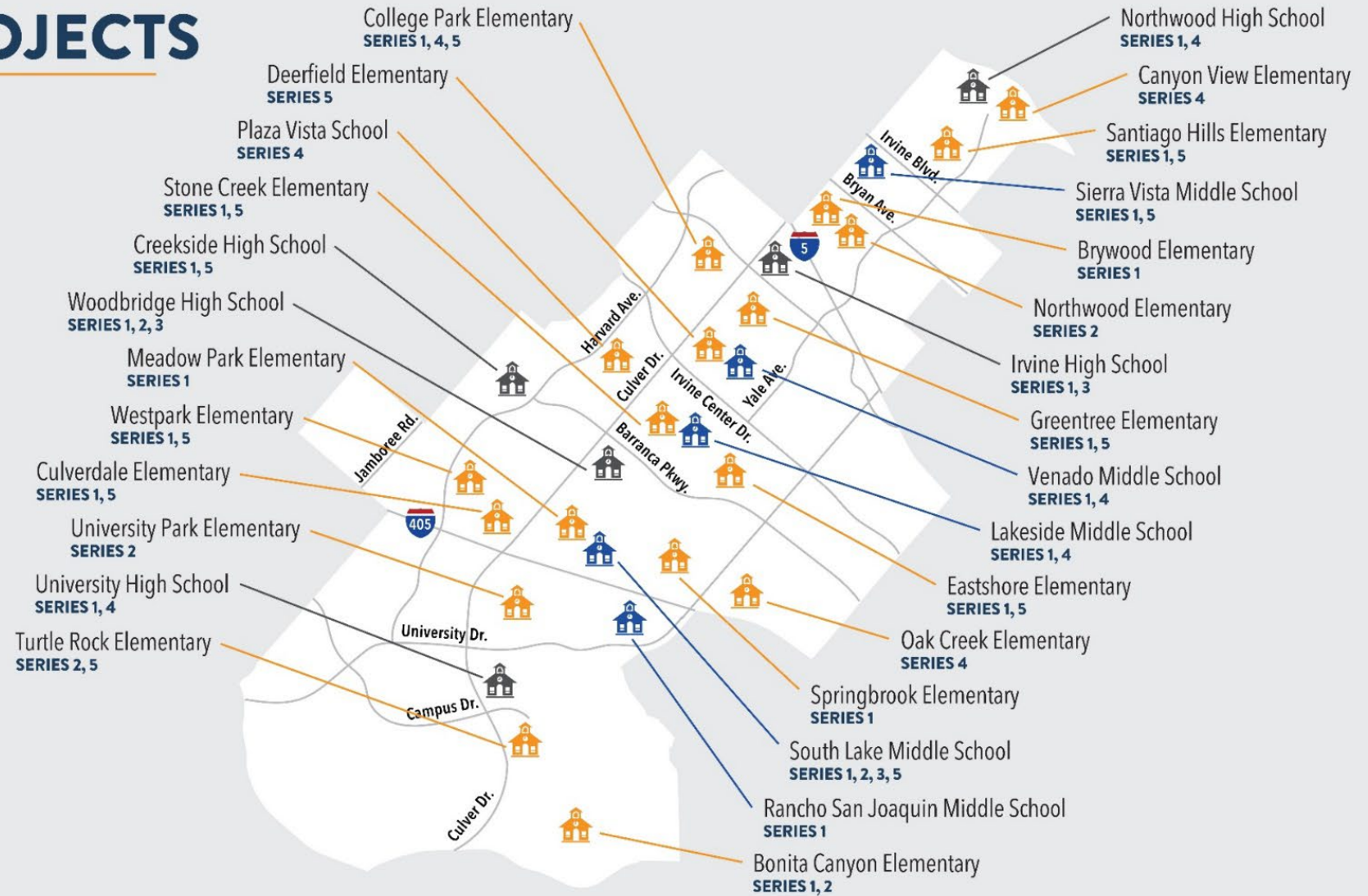
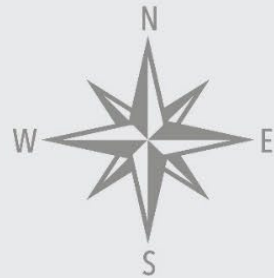


# MEASURE E PROJECTS

 - High Schools

 - Middle Schools

 - Elementary Schools



# Project Overview



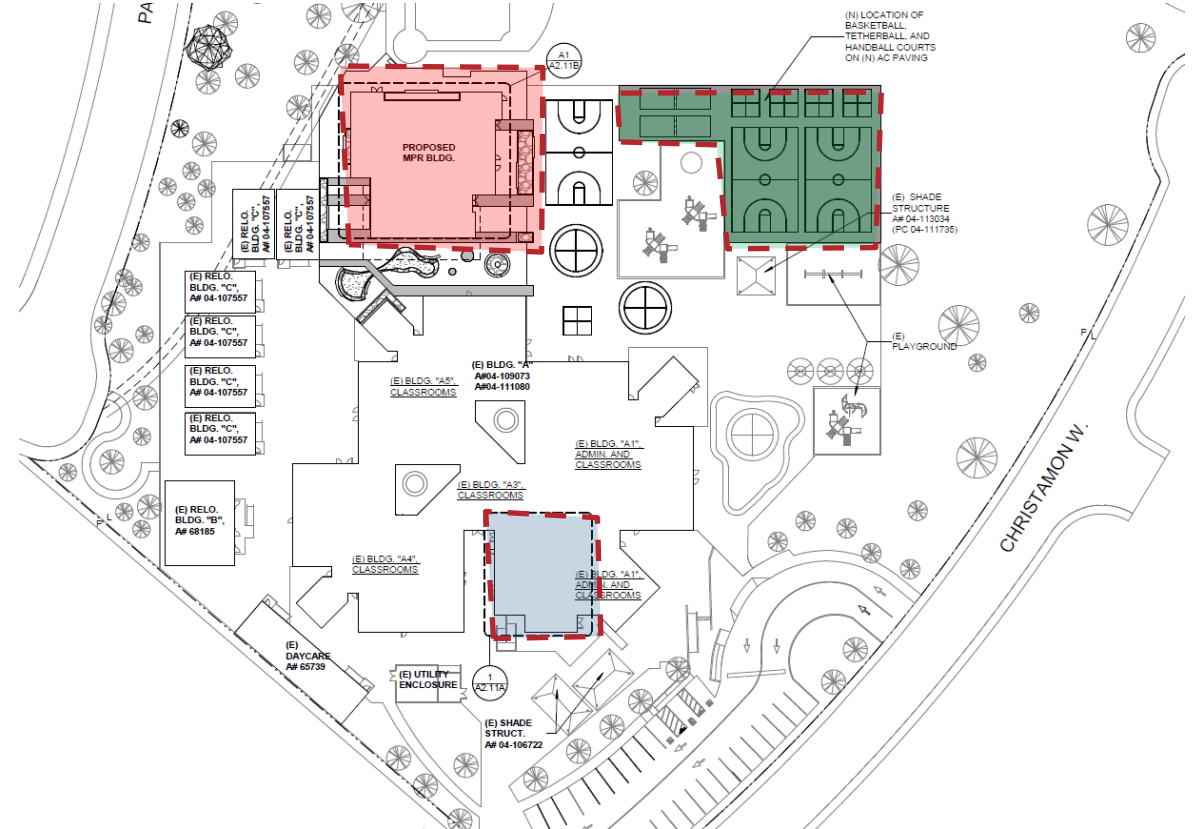
# PROJECT SCOPE

- Construct a new multi-purpose building that includes instrument storage, control booth and restrooms
- Reconfigure existing multi-purpose building into an innovation lab and broadcast room
- Reconfigure and expand the existing food services
- Construct new shade shelter outside food services
- Install new windows in classrooms at each pod
- Site work

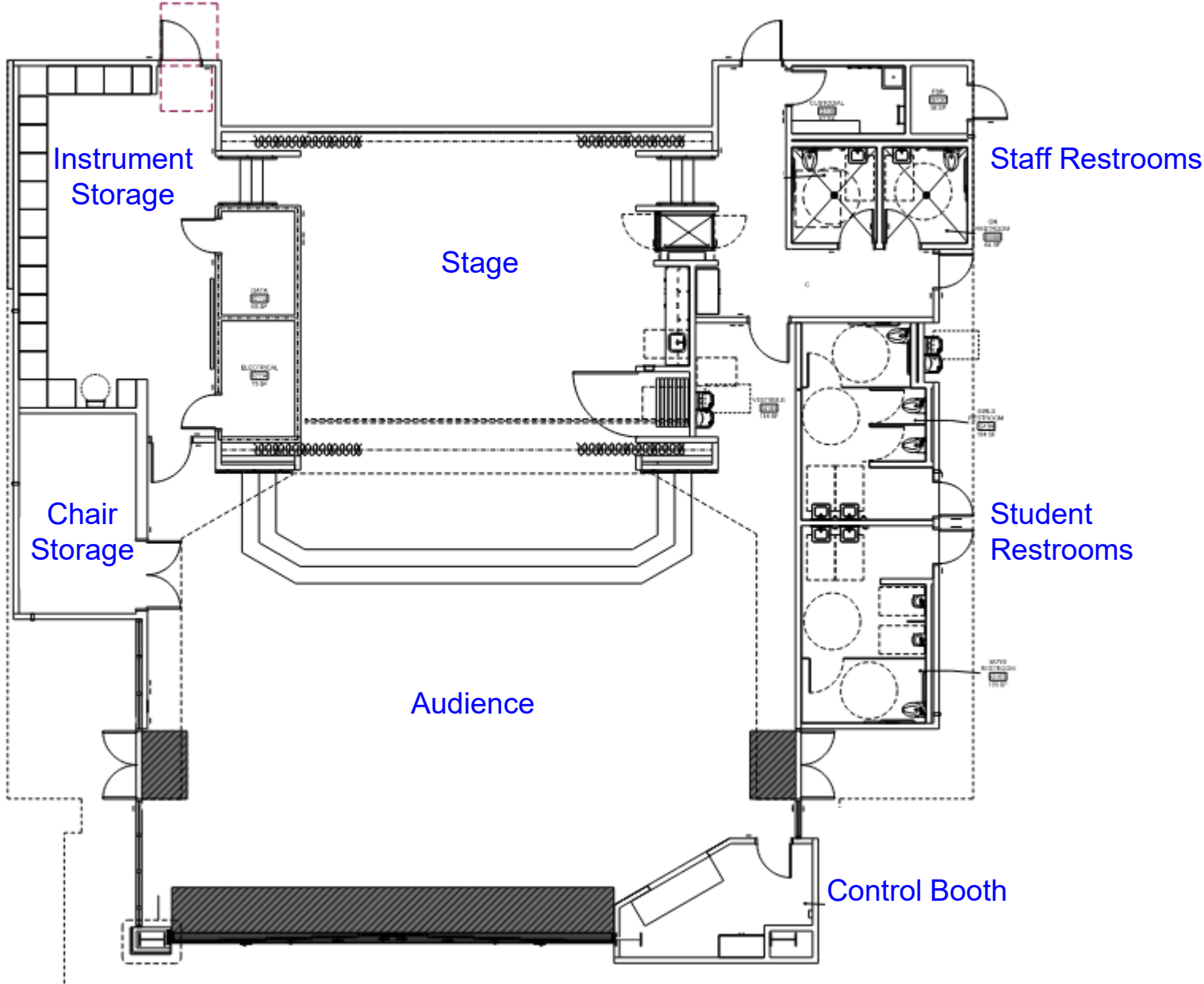




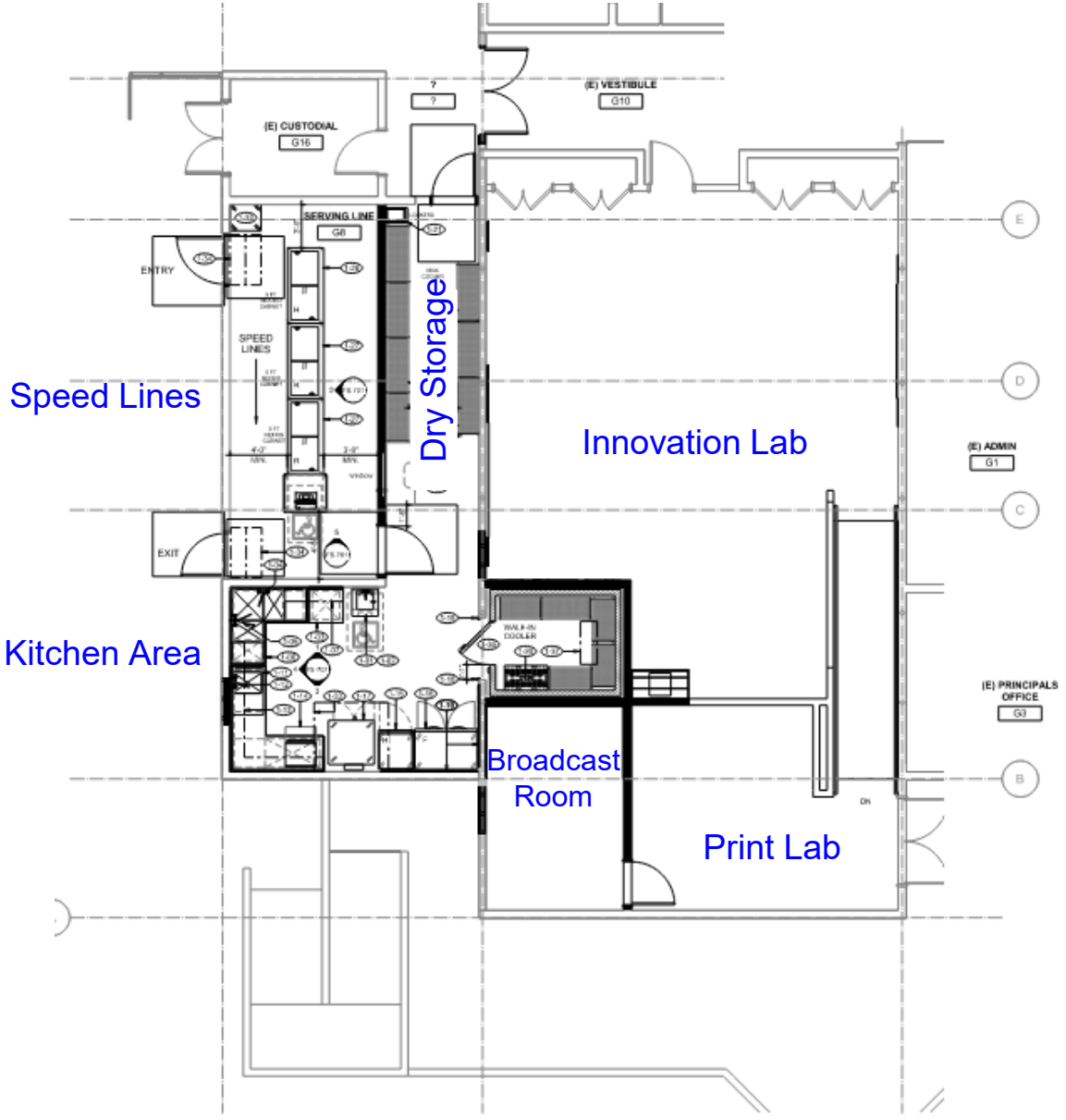
# NEW MPR BUILDING LOCATION AND NEW SITE PLAN



# MULTI-PURPOSE ROOM FLOOR PLAN



# INNOVATION LAB AND FOOD SERVICES FLOOR PLAN



# MULTI-PURPOSE BUILDING – EXTERIOR ELEVATION



# MULTI-PURPOSE BUILDING – INTERIOR ELEVATION



# MULTI-PURPOSE BUILDING – INTERIOR ELEVATION



# INNOVATION LAB – INTERIOR ELEVATION



# NEW SHADE SHELTER AT FOOD SERVICES

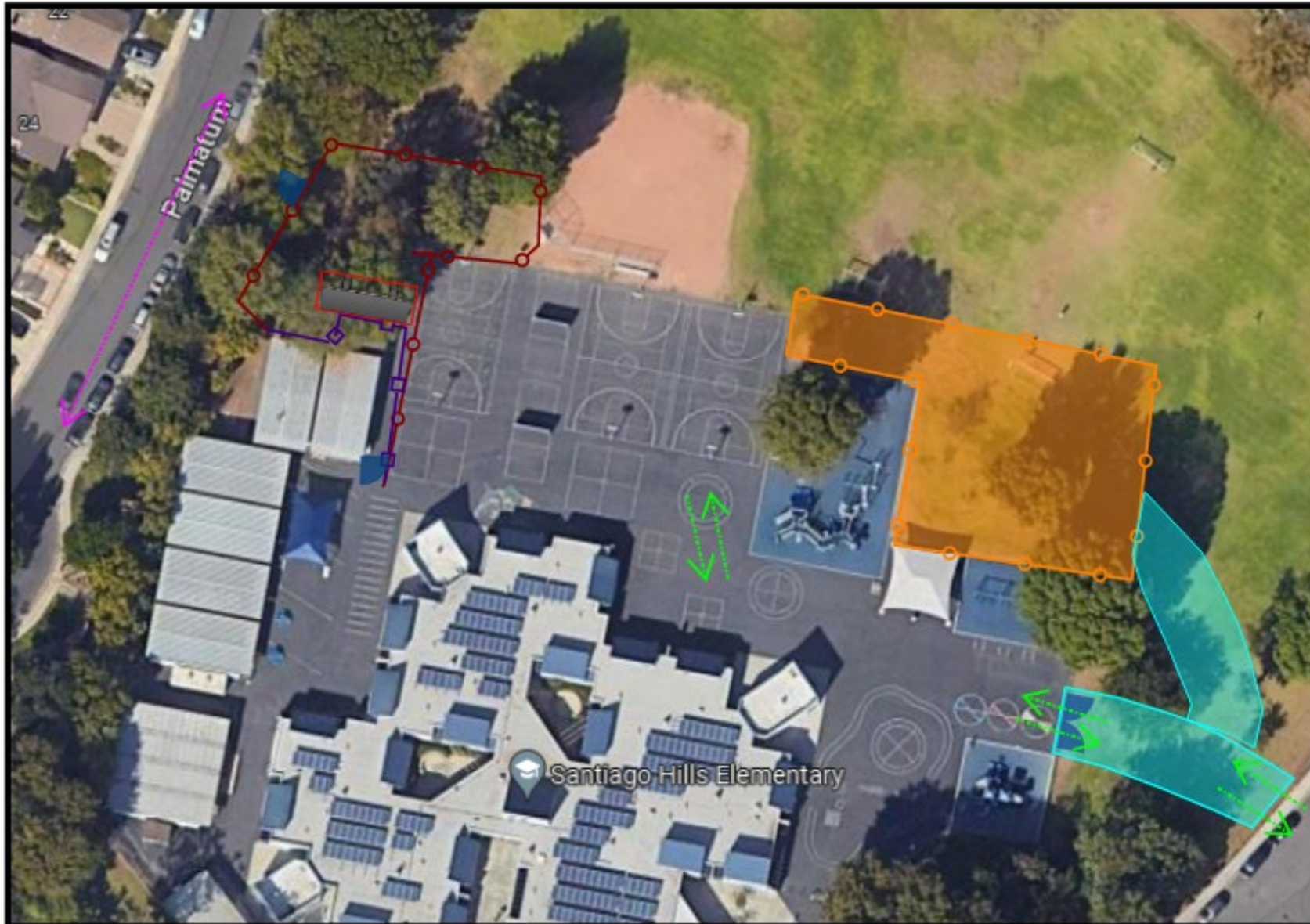




# Site Logistic & Phasing



# PHASE 1 - CONSTRUCTION OF NEW PLAYGROUND AREA OCTOBER 16, 2023 – NOVEMBER 2, 2023



## LEGEND

-  Construction Office
-  Temp. Fence
-  Sound Barrier Fence
-  Gate
-  Initial Playground Area Work Phase
-  Paved Fire Road
-  Contractor Parking
-  Main Site Access



# PHASE 2 - CONSTRUCTION OF NEW MPR BUILDING NOVEMBER 3, 2023 – AUGUST 9, 2024

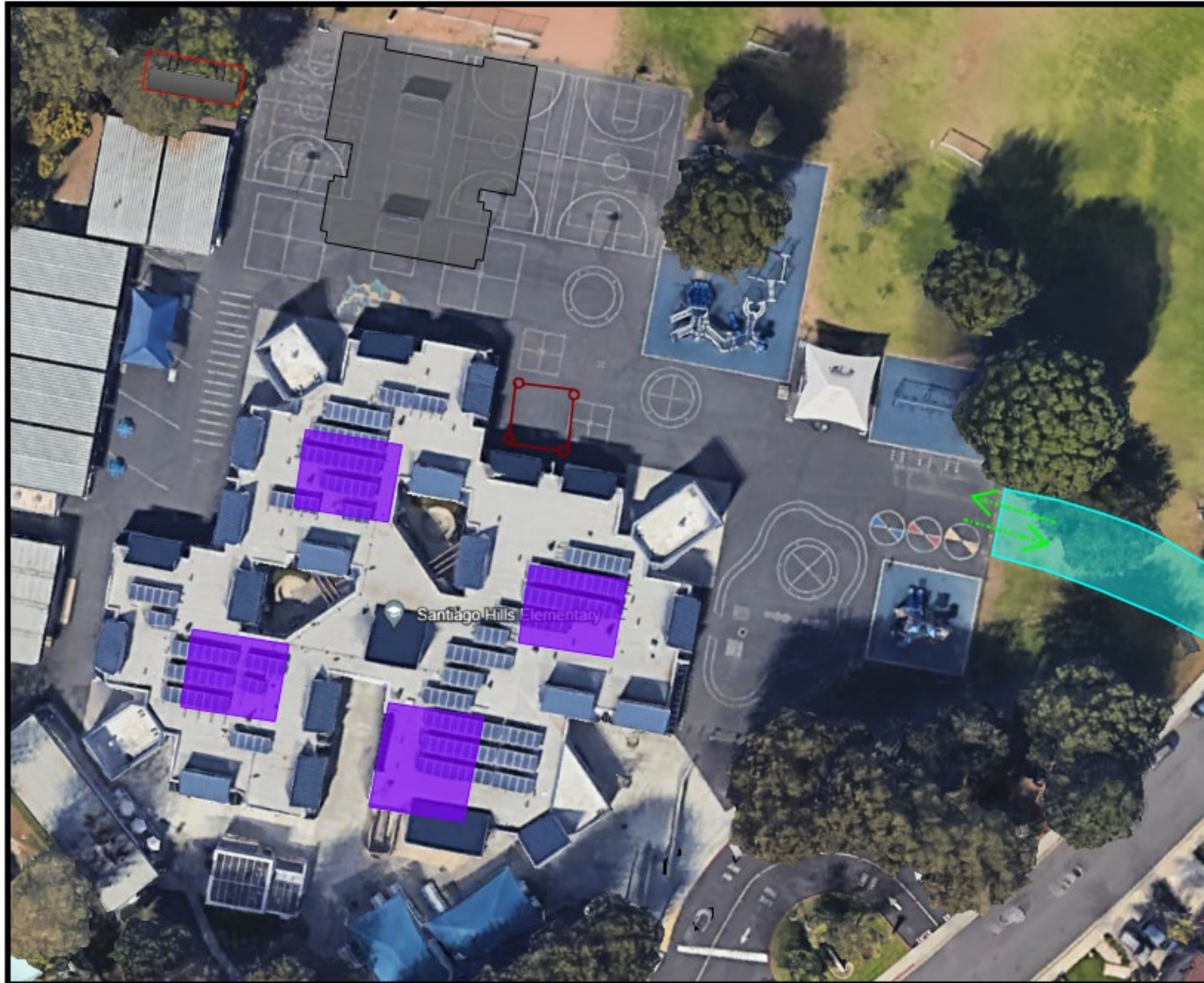


## LEGEND

-  Construction Office
-  Temp. Fence
-  Sound Barrier Fence
-  Gate
-  Initial Playground Area Work Phase
-  Paved Fire Road
-  Contractor Parking
-  Main Site Access



# PHASE 3 - CONSTRUCTION OF INTERIOR IMPROVEMENTS JUNE 10, 2024 – AUGUST 9, 2024



## LEGEND

-  Construction Office
-  Temp. Fence
-  Interior Improvements Work Areas
-  Paved Fire Road
-  Contractor Parking
-  Main Site Access



# Communication



# COMMUNICATION

- Any questions regarding the construction should be directed to the principal, Thomas Potwora





*Questions?*